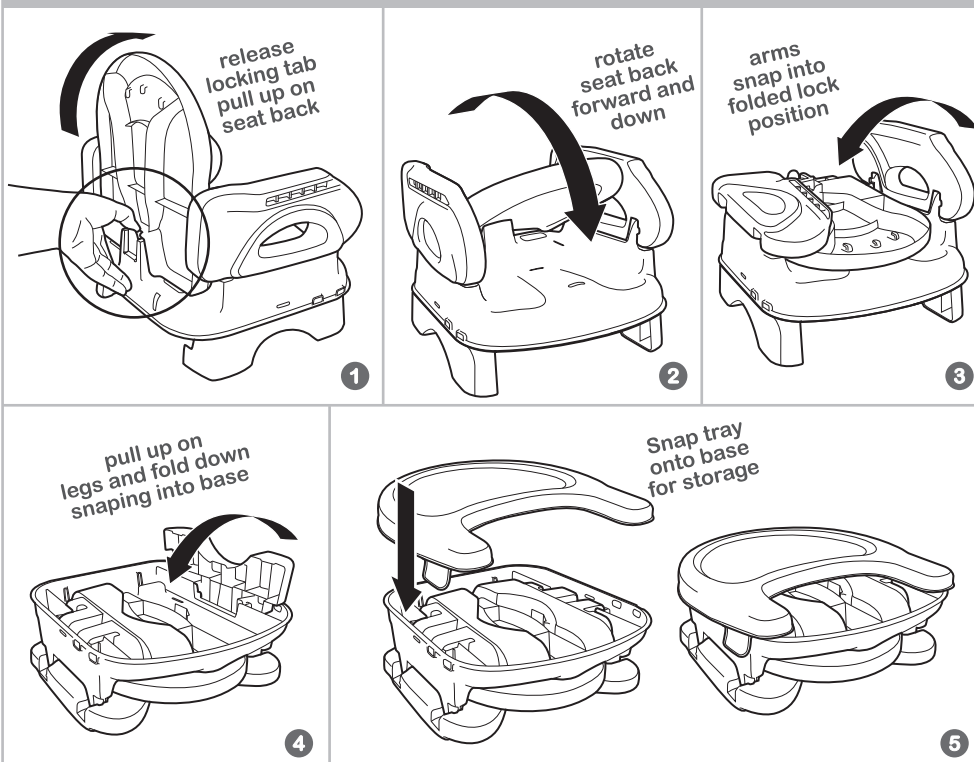


to fold:



to clean:

Wipe down with warm, soapy water and rinse clean. Wipe down with a clean dry cloth.

**Seat Pad:** Machine wash cold, gentle cycle, no bleach. Tumble dry, low heat.

Summer Infant stands behind all of its products. If you are not completely satisfied or have any questions, please contact our Consumer Relations Team at **1-401-671-6551** or [www.summerinfant.com/contact](http://www.summerinfant.com/contact) (For Europe call +44 (0)144 250 5000 or [customerserviceuk@summerinfant.com](mailto:customerserviceuk@summerinfant.com))

**Summer Infant (USA), Inc.**  
1275 Park East Drive  
Woonsocket, RI 02895 USA  
1-401-671-6551  
© 2019 Summer Infant (USA), Inc.

Styles and colors may vary.  
**MADE IN CHINA.**  
3 / 19

**I 3050D / I 3050AZ / I 3050Z / I 3060D / I 3520A**



Please read the following instructions and warnings carefully.

**Keep this instruction manual for future reference.**

Tool required: None.

For technical support, contact us at **1-401-671-6551** or [www.summerinfant.com/contact](http://www.summerinfant.com/contact)

Keep small parts away from children.

From 6 months up to 33 lbs.

Adult assembly required.

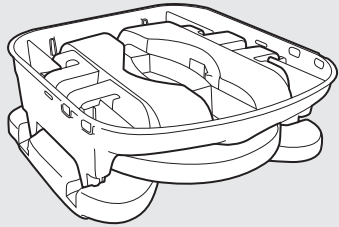
## INSTRUCTION MANUAL

### DELUXE COMFORT FOLDING BOOSTER SEAT

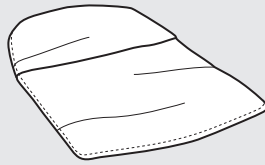
**⚠ WARNING** Children have suffered head injuries, including skull fractures, after falling with or from booster seats.

- Check that booster seat is **securely attached** to adult chair before each use.
- **Always use restraints** until child is able to get in and out of booster seat without help. Adjust to **fit snugly**.
- **Never allow child to push away from table.**
- **Never lift and carry child in booster seat.**
- **Stay near and watch your child during use.**
- **ALWAYS secure BOTH back and seat straps to an adult chair.**
- **NEVER lift this product with your child in it.**
- **NEVER leave child unattended and without supervision.**
- **NEVER use this product as a car seat or bath seat, on a table or counter top, stool, swivel chair, folding chair, unstable chair or any other chair where the straps cannot secure it properly.**
- **NEVER adjust the height while your child is in the seat.**
- Prevent serious injury or death. Do not use in motor vehicles.
- Minimum dimensions of adult chair that the booster seat shall be attached to: Seat Width: 14 in. and Depth: 13.5 in., and the Backrest Height is at least 8 in. tall.
- Until child is able to get in and out of the booster seat without help (about 2 1/2 years old), the child should be secured in the booster seat at all times by the restraining system. The tray is not designed to hold the child in the chair.
- Check that both the floor and seat of the chair are level before installing the booster seat.
- Prevent finger injury: Keep child's hands away when installing the tray.
- Discontinue use of product if damaged, broken, or disassembled.
- Once installed, check the security and position of the booster seat.

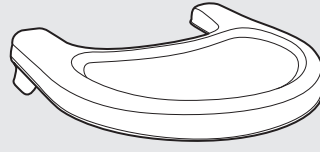
## components:



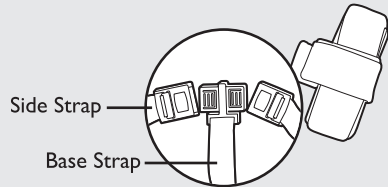
Booster Seat (folded view)



Seat Pad

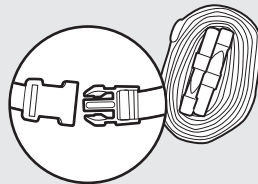


Tray



Side Strap  
Base Strap

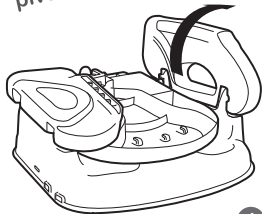
Child Restraint Straps



Chair Straps

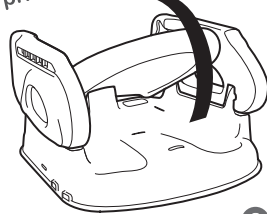
## set-up:

pivot arms up



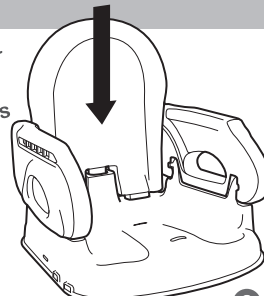
1

pivot seat up



2

press seat down to snap into locks on arm rests



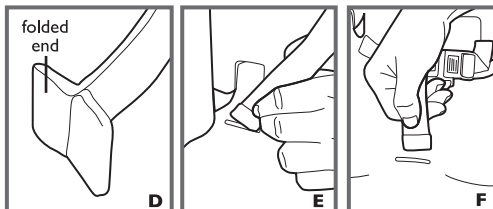
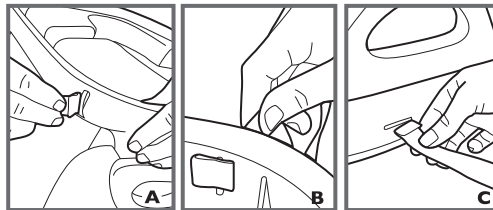
3

## strap assembly:

**Step 1:** Flip booster seat over. Slide folded ends of chair straps into slots on the back of the chair (Figure A). Pull up to ensure straps are secured in slots (Figure B). Repeat for side chair straps. (Figure C).

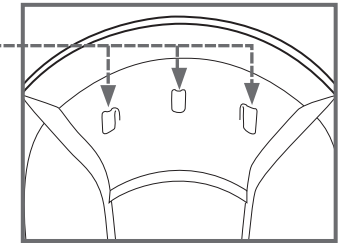
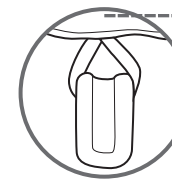
**Note:** Child restraint straps come pre-assembled. Once disassembled for washing, please follow **Step 2** to re-assemble straps.

**Step 2:** Slide folded ends (Figure D) of side restraint straps through rear holes located on the back of the seat bottom (Figure E). Slide folded end of base restraint strap into front slot located on front of seat bottom (Figure F). Pull up to ensure straps are secured in slots.



## seatpad assembly:

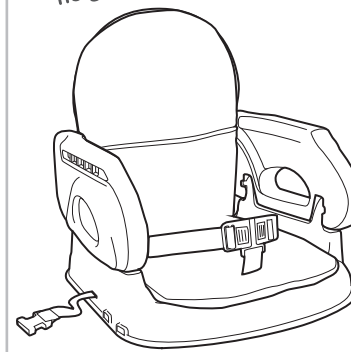
attach loops!



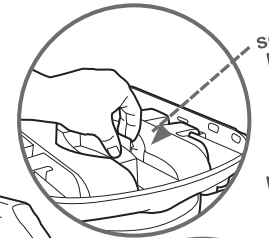
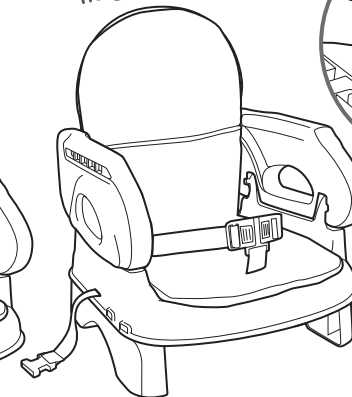
seat back hooks

## height adjust:

height level 1



height level 2

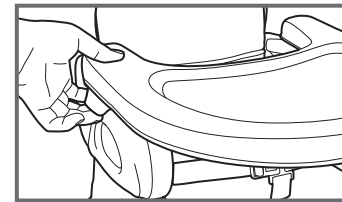


squeeze locking tabs

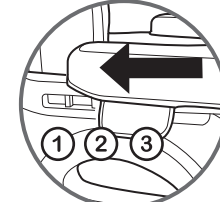
pivot legs up & push down into base



## to use with tray:



pull up on locking tabs and slide tray into place



3 tray positions for growing children

to remove: pull up the 2 locking tabs underneath & slide off

## to use booster seat:

**Step 1:** Place booster seat onto chair. Pass the bottom chair straps under base of chair and secure buckle. Pull and tighten chair strap to ensure a snug fit (Figure G).

**Step 2:** Pass rear chair strap around back of chair and secure buckle (Figure H). Pull and tighten chair strap to ensure a snug fit.

